

# THE WORLD'S MOST APPLAUDED GRAND

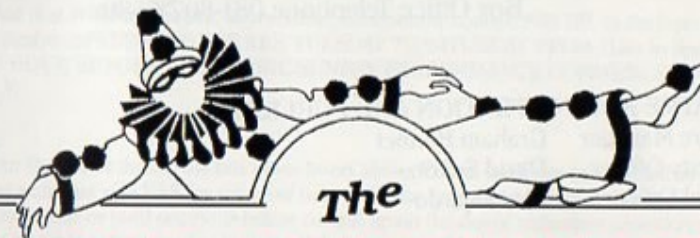


Only the finest materials, the most dedicated craftsmanship and the constant study of the science of sound for more than 60 years could make it possible for Kawai to offer concert artists and you such a uniformly beautiful range of Grand and Upright pianos. Pianos made for every concert hall, every score, every pianist, every audience, with 12 models in all.

## KAWAI GRAND PIANO

Kawai UK Ltd  
Sun Alliance House  
8-10 Dean Park Crescent  
Bournemouth  
Dorset BH1 1HL  
Telephone (0202) 296629

ENFIELD LIGHT OPERATIC & DRAMATIC SOCIETY  
presents (Amateur)



## GOOD COMPANIONS

The Musical of the Novel by J.B. Priestley

Lyrics by JOHNNY MERCER  
Music by ANDRÉ PREVIN

By arrangement with  
WARNER CHAPPELL MUSIC LTD.

**TUES. 9th APRIL – SAT 13th APRIL 1991**  
at  
**7.45 p.m.**

**MILLFIELD  
THEATRE**

Silver Street  
Edmonton  
London N18 1PJ  
081-807 6680

**MILLFIELD THEATRE  
SILVER STREET  
EDMONTON  
LONDON N18 1PJ**

Administration Telephone 081-807 6186  
Box Office Telephone 081-807-6680

**THEATRE ADMINISTRATION AND PUBLICITY**

Theatre Manager Graham Bennet  
Publicity Officer David Sefton  
Clerical Officer Lisa Fajardo

**TECHNICAL SERVICES**

Assistant Theatre Manager (Technical) To be appointed  
Technical Assistant Andy Buckland

**BOX OFFICE**

Box Office Manager Margaret Savage  
Box Office Assistant Jean Edwards

MILLFIELD THEATRE LTD has been set up as a Company Limited by guarantee No 226477 (Cardiff). Registered Office: Civic Centre Silver St., Enfield EN1 3XA

**MILLFIELD THEATRE BOARD MEMBERS**

Millfield Theatre Board Members: Councillors Graham Eustance (Chairman), John A. Connew, Andreas Constantinides, Pat Dawson, John J. Jackson, Alex Mattingley, Ian McCann, Terence Neville, Kathy Prowse, Sian Walker, Mr. Keith Stevens (Borough Librarian)

**MILLFIELD THEATRE VOLUNTEERS**

Millfield Theatre runs smoothly thanks to the assistance of numerous volunteers. The team of volunteers always welcomes new members to assist with the front of house operation. Age and experience are immaterial as training will be given. If you can spare some time to help your local theatre, gain valuable work experience and have fun at the same time, please contact K. Sturdy on 081-366-4373.

**MILLFIELD THEATRE AT YOUR SERVICE**

**BOX OFFICE Tel 081-807 6680**

The Box Office accepts bookings by post, phone or in person and welcomes payment by cheque, credit card or cash.

**IN PERSON**

The Box office is at Millfield Theatre, Silver Street, Edmonton, London N18 1PJ, in the foyer of the library and theatre. OPENING HOURS ARE TUESDAY TO SATURDAY FROM 11am to 5pm AND FROM ONE HOUR BEFORE AN EVENING/SUNDAY PERFORMANCE COMMENCES FOR THAT SHOW ONLY.

**BY PHONE**

Telephone our Box office during the box office hours above. Phone bookings can be paid by credit card or by sending a cheque with SAE for return of tickets. Please note that telephone reservations can only be held for three days or until one hour before curtain-up on the day of performance (whichever falls sooner). If payment is not received in time the tickets may be sold.

**PARTY DISCOUNTS**

Party discounts are available for some shows. For details of these and other offers please contact the box office.

**CATERING**

A licensed bar is available for theatre goers. It is open from one hour before a performance commences. Children's parties are also available, for further information contact the Theatre Manager.

**DISABLED ACCESS AND FACILITIES**

There is a horizontal access to the auditorium, box office, bar disabled toilets and car parking. We can accommodate a limited number of wheelchairs in the auditorium. In accordance with licensing regulations, persons in wheelchairs must have an able-bodied escort and places MUST BE BOOKED IN ADVANCE. There is an induction loop in the auditorium for the hard of hearing. Hearing aids should be tuned to T.

**KEEP UP TO DATE WITH MILLFIELD THEATRE EVENTS**

To receive regular advanced information about forthcoming events you may join our FREE mail list. Please contact the box office.

**MILLFIELD THEATRE TECHNICAL SERVICES - MITTS**

Millfield Theatre has a technical services facility. MITTS can provide a complete high quality technical advice and operational package both for users of the theatre and external events organisers. The service could provide technical equipment and operators for an indoor or outdoor event. This could include a small scale theatre presentation, a rock concert, trade show or a major open-air festival. For further details please contact The Technical Manager on 081-807 6186.

## BUY A SEAT APPEAL

Over 200 of the seats in the Millfield Theatre bear an attractive named plaque. These are seats which have been sponsored by individuals, groups or companies to assist with the fund-raising drive. It is this fund-raising which has provided the technical equipment and seating that have made it possible for you to enjoy today's show. A registered Charity, the Enfield Arts Centre and Theatre Trust, has been in existence for many years to fund-raise for this project, and there is still a good deal of money needed to equip the theatre more comprehensively. One major item of equipment that we need for example is a cinema projector to enable the theatre to offer a film programme.

Just £75 will buy a seat which will bear a plaque with your name on in perpetuity. A board in the attractive foyer lists all donors. Buy-a-Seat donors automatically become "Friends" of the theatre. For details of the Buy-a-Seat Appeal, please contact E. Foster on 081-886 2345.

### FRIENDS OF MILLFIELD THEATRE

For an annual payment of £5 your family can join our Friends organisation. This will give you regular updates on theatre events, priority booking and various other special offers. For further details please contact the Millfield Friends Co-ordinator, E. Foster on 081-886 2345.

### BUSINESS OPPORTUNITIES

If you are involved with a local business, there are opportunities for involvement in sponsorship, advertising in our programme, or to help us financially with a Buy-a-Seat donation. For further information please contact the Theatre Manager on 081-807 6186.

## BUSINESS BUY-A-SEAT DONORS

### Prime

Secretarial Services

#### TYPING SERVICES

Letters, CV's, Reports, Accounts etc.

Photocopying and Fax bureau

Telephone answering service

Design and Printing

483 Green Lanes London N13 4BS

TEL 081-886 0812 FAX 081-882 8485

### THE SUELLA SCHOOL OF DANCE AND DRAMA

Tap, Ballet, Modern Theatre Dance  
and Drama classes for all ages at

St. Aldhelms Church Hall  
(opposite Millfield Theatre)

Tues/Wed/Thurs eves and Sat morn  
Fully qualified I.S.T.D. Teachers  
Examinations/Theatre Productions

For further information contact  
Susan Povey 081-804 2907

# The GOOD COMPANIONS

The Musical of the Novel by J.B. Priestley

First published in 1929 *The Good Companions* was an instant success. Adapted for stage it starred John Gielgud as Inigo, who then played opposite Jessie Matthews as Susie in the 1932 film version. The most recent TV adaptation was a nine part serial with Jan Francis in 1978. Our musical starred John Mills and Judi Dench at Her Majesty's Theatre in 1974.

The Dinky Doo's (a not very good Pierrot Troupe) are stranded. Their manager has absconded with the takings and their show has been impounded. Three characters arrive; a spinster, an ex-schoolmaster and an unemployed handyman, and all their lives change for ever.

Director & Choreographer — Paul St. James  
Musical Director — Mark Newport

## ★ CAST ★

MR. JOE BRUNDIT  
MRS. JOE BRUNDIT  
SUSIE DEAN  
JERRY JERNINGHAM  
ELSIE LONGSTAFFE  
JIMMY NUNN  
MORTON MITCHUM  
INIGO JOLLIFANT  
ELIZABETH TRANT  
JESS OAKROYD  
SAM OGLETHORPE  
TED  
MISS THONG  
SYLVIA DURRELL  
DOTTY MAKEPEACE  
DAISY COOPER  
MABEL MARSH

Mr. Billingham — Mike Gilbert  
Box Office Lady — Dianne Fox  
Autograph Hunter — Sue Collings  
Mrs. Oakroyd — Jean Streeton  
Leonard — Mark Harris  
Albert — Leslie Gershman  
Hugh MacFarlane — Geoff Knight  
Hilda — Janet Sinfield  
Truby — Colin Hoath  
Mr. Tarvin — James Inwood  
Mrs. Tarvin — Sally Pascoe  
Miss Callender — Chris Tero  
Sgt. Comrie — Mike Gilbert  
Mr. Fauntley — Gerry O'Rourke

RICHARD BODEK  
MARJORIE HANSON  
JULIA HARRIS  
DAVID SHORT  
RACHEL BAILEY  
COLIN ARROWSMITH  
HOWARD WRIGHT  
PAUL CODY  
KATIE GOLDING  
PAUL ST JAMES  
JAMES INWOOD  
COLIN HOATH  
ELSPETH LINDSEY  
DIANE PADLEY  
KATY SEELEY  
SALLY PEARSON  
SUE BARD

Felton — Leslie Gershman  
Photographer — Mark Harris  
Ridvers — Anthony Golding  
Nobby — Colin Hoath  
Fred — Gerry O'Rourke  
Miss Gooch — Jean Streeton  
Lady Partlit — Dianne Fox  
Milbrau — James Inwood  
Pitsner — Geoff Knight  
Monte Mortimer — Mike Gilbert  
Ethel Georgia — Sally Pascoe  
Policeman — Joe Harris  
Policeman — Gavin Bligh

## ★ SYNOPSIS OF SCENES ★

September 1929 ACT 1

- 1 Stage of the Assembly Rooms, Rawsley
- 2 Bruddersford
- 3 Kitchen of Ogden Street
- 4 Back of a large lorry
- 5 Rawsley
- 6 Hall of a Cotswold house
- 7 Rawsley
- 8 Washbury Manor School
- 9 Dullingham Junction
- 10 On the road to Rawsley
- 11 Rawsley
- 12 Royal Standard Dining-rooms

ACT 2

- 1 Assembly Rooms, Rawsley
- 2 Crewe Railway Station
- 3 Sandybay Railway Station
- 4 The Pier, Sandybay
- 5 Green Room
- 6 Dressing-room, Sandybay Pavilion
- 7 Miss Trant's hotel, Sandybay
- 8 London Restaurant
- 9 Sandybay
- 10 Ogden Street, Bruddersford
- 11 Quayside, Southampton

## ★ MUSICAL NUMBERS ★

ACT 1

- OVERTURE
- Good-bye (*Dinky Doos*) . . . . .
- Camaraderie (*Jerry, Susie, Mr. & Mrs. Joe, Nunn, Elsie and Chorus*) . . . . .
- All mucked up. The Pools (*Jess and Chorus*) . . . . .
- Aye, Lad (*Jess, Sam and Ted*) . . . . .
- The Great North Road (*Jess*) . . . . .
- Footloose (*Miss Trant*) . . . . .
- Gaudeamus (*Female Chorus offstage*) . . . . .
- On my way (*Inigo*) . . . . .
- Slippin' around the corner (*Inigo with Mitchum*) . . . . .
- May I have the pleasure of your company? (*Mitchum, Inigo, Miss Trant, Jess and Chorus*) . . . . .
- Stage Struck (*Susie*) . . . . .
- The Dance of Life (*Miss Trant*) . . . . .
- May I have the pleasure? (*Reprise*) (*Inigo, Dinky Doos and Chorus*) . . . . .
- Good Companions (*Inigo, Mitchum and Company*) . . . . .

## INTERVAL OF 20 MINUTES

ACT 2

- Slippin' around the corner (*Jerry*) . . . . .
- A Little Travelling Music (*Mitchum, Jerry, Susie, Elsie and Chorus*) . . . . .
- Black Week Medley (*Mitchum, Inigo and Miss Trant*) . . . . .
- And points beyond (*Jess, Susie, Mitchum, Inigo, Elsie, Jerry, Miss Trant, Miss Thong and Mrs Joe*) . . . . .
- Darkest before dawn (*Miss Trant*) . . . . .
- Good-bye (*Reprise*) (*Good Companions and Chorus*) . . . . .
- Susie for everybody (*Inigo and Susie*) . . . . .
- Ta, Luv (*Jess*) . . . . .
- I'll tell the world (*Jerry, Susie, Inigo and Chorus*) . . . . .
- Stage door John (*Susie*) . . . . .
- Jess's Letters (*Jess*) . . . . .
- Good Companions (*Finale*) (*Full Company*) . . . . .

## ★ PRINCIPAL CHARACTERS ★



**PAUL ST JAMES** — Director and Jess Oakroyd

An ELODS member since 1978. Paul played 'M.C.' in 'CABARET', various juvenile leads and directed 'SWEET CHARITY'. Professionally, Paul has written, directed, choreographed, and appeared in Pantomime, Variety, Pop Videos, Commercials, Opera, Operetta, Rock Musical and the National Tour of 'THE SOUND OF MUSIC' (17 going on 27). With twin brother, Peter, he featured in the 1989 CHILDRENS ROYAL VARIETY SHOW singing with the BLUE PETER presenters, partnering Yvette Fielding.

**KATIE GOLDING** — Elizabeth Trant

Katie joined ELODS in 1980 on the demise of Chandos Opera Company. She has played a number of minor roles in shows including 'Fiddler', 'Oklahoma', 'Finian's Rainbow', 'Chicago', 'Pajama Game' and 'Mummy Bear' in 'Goldilocks'. Her only other major role to date was 'Sally Bowles' in 'Cabaret'. Katie lives locally with one large husband and two large hounds.



**PAUL CODY** — Inigo Jollifant

Paul had a taste for the theatre at an early age when he saw his Grandparents appearing in local shows performed by Chandos Opera Society, which he subsequently joined after leaving school. He has been a member of ELODS for the past 10 years and has taken various roles including 'Will Parker' in 'Oklahoma', 'Motel' in 'Fiddler on the Roof', 'M.C.' in 'Cabaret' and more recently Corporal 'Billy Jester' in 'Little Mary Sunshine'.



**HOWARD WRIGHT** — Morton Mitchum

Howard's theatrical life started at school as stage crew for ELODS, eventually making his on-stage debut with the company in 1977. Following in his parent's footsteps, he has played many principal roles for ELODS and for other local groups. Howard's favourite roles include 'Bernardo' in 'West Side Story', 'Bloodthirsty Black' in 'Goldilocks and The Three Bears', and more recently for ELODS 'The Pirate King' in 'Pirates of Penzance', 'Billy Flynn' in 'Chicago' and 'Captain Big Jim Warrington' in 'Little Mary Sunshine'.



**DAVID SHORT** — Jerry Jertingham

David, a member of Choreodrama for three and a half years, was thrilled when asked to perform 'Good Companions' with ELODS. David is best known for his portrayal of 'Nicely Nicely Johnson' in 'Guys and Dolls', 'Rolf' in the 'Sound of Music' and 'Ike Skidmore' in 'Oklahoma'. He is a member of Folkwood, a rock gospel group, a Morris Playford dancer and runs his own youth drama group. David gets married next year to his fiancée, Joanne; yet another Choreodrama romance! David's main ambition is to play 'Alex' in 'Aspects of Love'.

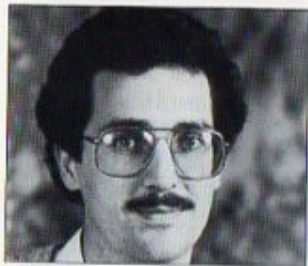
**JULIA HARRIS** — Susie Dean

Most Tuesdays and Fridays since 1979 have found Julia departing her Winchmore Hill home to rehearse the current ELODS show. Starting as an anonymous dancer in 'Free as Air' she has progressed to such character roles as 'Nicky' Sweet Charity, 'Hodel' Fiddler, 'Sharon' Finian's Rainbow and to the dizzy heights of the eponymous 'Goldilocks' in the pantomime.



## ★ THE COMPANY ★





**MARK NEWPORT** — Musical Director

Since leaving the Royal Academy of Music, Mark has established a successful and varied career as a freelance musician incorporating the 'rigours' of recital work with the 'fun' of Panto with Bernie Winters. Recent engagements have included a 'Royal Gala', as Musical Director of 'Young Stars of Tomorrow' and stage shows with 'Young Variety Club'. Mark is presently working with 'Opera East', 'Starlight Express', and as MD for the Mozart Opera Project at the Guildford School of Acting.

**OUR NEXT PRODUCTION IS:**

Gilbert and Sullivan's

**"Princess IDA"**

Tuesday 29th October — Saturday 2nd November 1991

AT THIS THEATRE

If you would like to be on the mailing list, please complete this form and place in the box in the foyer or send it to:

Mr J. Pearson, 13 Boundary Road, Edmonton N9 8AX.

I would like to be on ELODS Mailing List

Name: \_\_\_\_\_

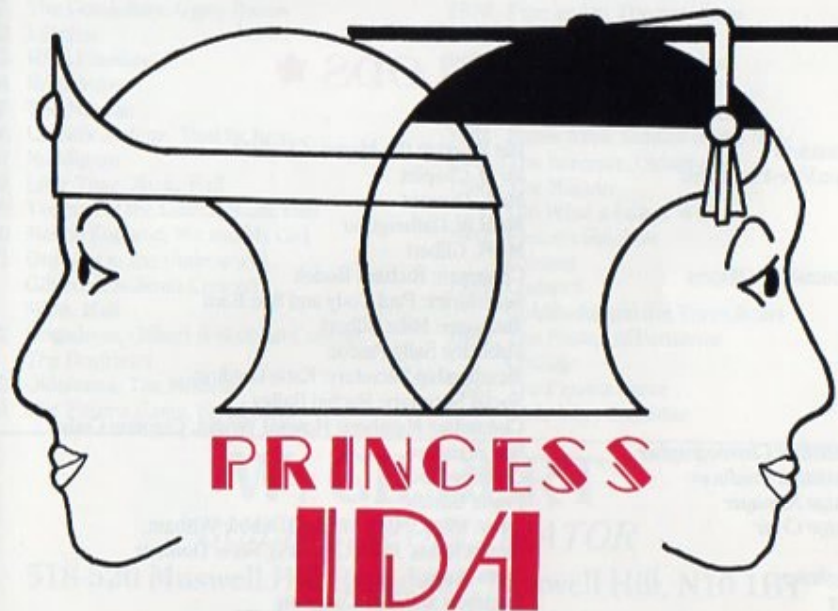
Address: \_\_\_\_\_

Tel: \_\_\_\_\_

**ENFIELD LIGHT OPERATIC & DRAMATIC SOCIETY**  
(Amateur)

*OUR NEXT PRODUCTION*

GILBERT & SULLIVAN'S



**TUESDAY 29th OCTOBER — SATURDAY 2nd NOVEMBER 1991**

**MILLFIELD**  
**THEATRE**

A "Hundred" school girls armed to the teeth. A fine body of men ready, nay willing to fight. Two pompous old fathers at loggerheads. Three sailors dressed as girls. A surprise ducking in the moat. A champagne picnic — what more does one need for a riotous evening of entertainment?

**Ticket Secretary — Mr. J. Pearson — Telephone: 081-804 4420**



**ENFIELD LAWN TENNIS CLUB  
71 THE RIDGEWAY, ENFIELD**

Allweather Courts  
and Floodlights

*Ladies and Mens  
League Teams*

*Adults and Juniors Welcome*

*Coaching available*

Tel No:  
081-363 0399  
or  
081-366 4666

**CHEQUERS  
CATERING**

Buffets for all  
occasions

*Top Quality*

**081-363 0399**

WEDDINGS A SPECIALITY

**Next week at Millfield Theatre**

Phoenix Theatre Company presents

**LITTLE SHOP  
OF  
HORRORS**

Book and lyrics by  
Howard Ashman

Music by  
Alan Menken

Business blooms at Mushnik's Skid Row florists when green-fingered Seymour displays his new and exotic plant. But the only nourishment Audrey II craves is warm, red - and inside Seymour! And soon the Mean Green Mother from Outer Space grows on the rampage in a riotous musical extravaganza with dazzling special effects and top comedy talent

Wednesday 17th - Saturday 20th April at 8.00pm. Saturday matinee at 3pm

**Book now! Action-packed fun for ALL the family!**

**"PAINT & PAPER"**

*Interior Decorating  
and Carpentry*

Ring John Hooper  
on 081-366 6725

**C  
A  
B  
A  
R  
E  
T**

**RISLEY OPERATIC  
GROUP**

*(Amateur)*

Affiliated to N.O.D.A & Enfield Arts Council

TUES. 14th - SAT. 18th MAY 1991 - 7:30 pm  
SATURDAY MATINEE at 2:30 pm

MUSIC BY  
JOHN KANDER

LYRICS BY  
FRED EBB

BROADWAY PRODUCTION  
BY  
HAROLD PRINCE



by arrangement with Musicworks Ltd and Stage Musicale Ltd of New York  
Book by JOE MASTEROFF, based on the play "I AM A CAMERA" by JOHN VAN DRUTEN  
and stories by CHRISTOPHER ISHERWOOD.

Tickets available until 23rd Apr. from: Tel: (081) 364-0817

MILLFIELD Silver Street, Edmonton N18 1PJ  
THEATRE Box Office: (081) 807 6680

**GLEAMACHINE**

Mobile Car Valeting Service  
Vehicles valeted outside your home or workplace

081-360 4905  
Mobile 0836 299946

